

# Achieving Global Impact

Strategic Plan: 2026-2030  
.....

In 2025, the World Federation of Hemophilia (WFH) completed its 2021-2025 Strategic Plan. As we embark on the 2026–2030 Strategic Plan, we will build on our successes and lessons learned to continue the federation’s journey towards its vision of Treatment for All—a world where all people with inherited bleeding disorders have access to care, regardless of their type of bleeding disorder, gender, age, or where they live.

## Global context

The overwhelming majority of people living with inherited bleeding disorders around the world still do not have access to diagnosis, treatment and care. The inequity in care is stark: the diagnosis rate for hemophilia is 81% in Europe—and just 8% in Africa. Women and people with von Willebrand disease (VWD) and rare bleeding disorders face even greater barriers to diagnosis and care.



Despite advances,

**+75%**

of people with hemophilia  
remain undiagnosed  
or untreated.

# Who we are



The World Federation of Hemophilia (WFH) is a global organization exclusively focused on inherited bleeding disorders and a global convener uniquely positioned to **align the voices of people with bleeding disorders, clinical expertise, and government action.**

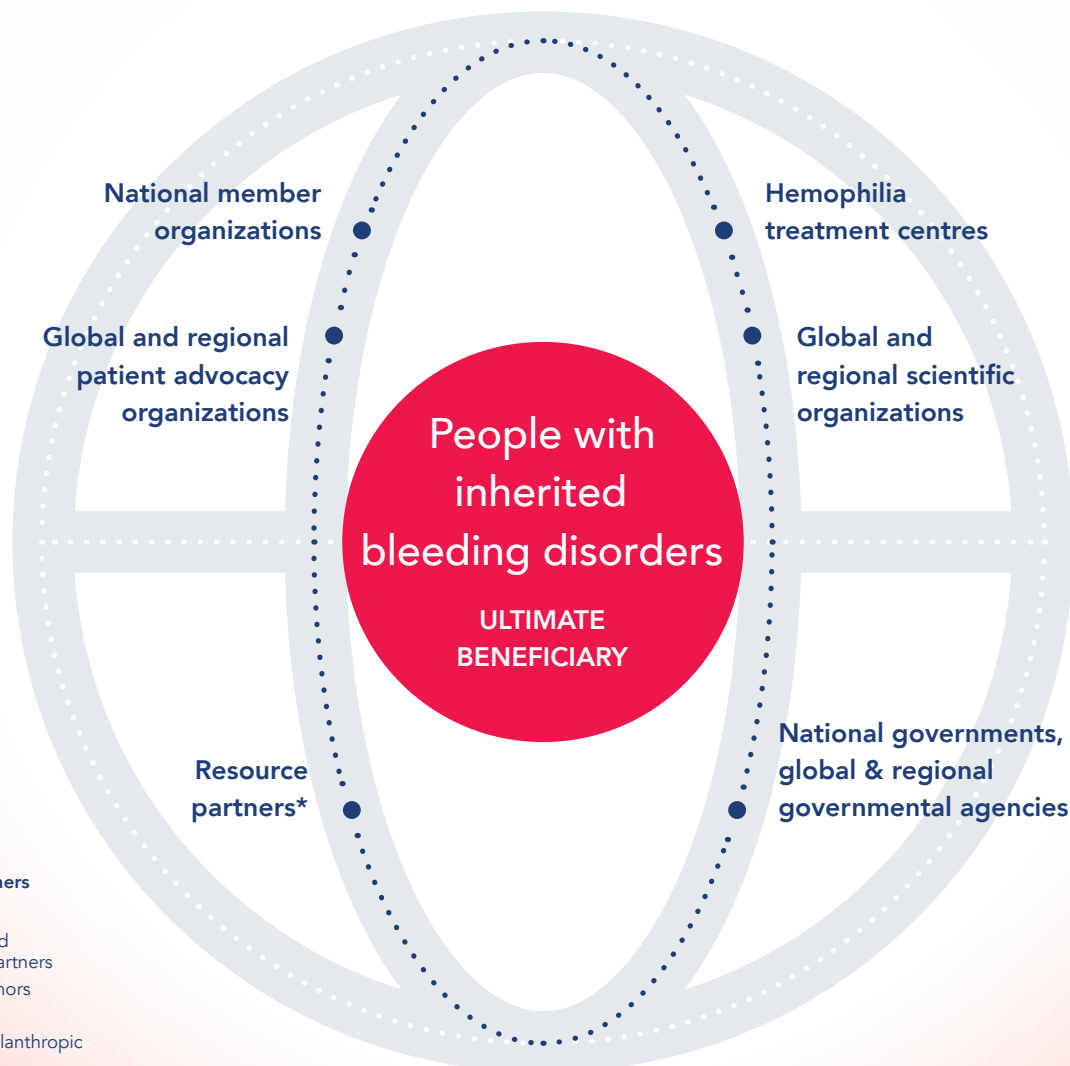


Founded in 1963 and officially recognized by the World Health Organization (WHO), the WFH brings together patients, clinicians, governments, and **partners across 152 countries to drive coordinated action and lasting change.**



We work collaboratively with national member organizations (NMOs), hemophilia treatment centres (HTCs), patient advocacy organizations, scientific organizations, governments, and corporate partners. Our multi-stakeholder approach ensures systems work together to deliver **sustainable, country-driven solutions that create lasting change.**

## Our key stakeholders



**\*Resource partners**

- WFH USA
- Corporate and community partners
- Individual donors
- Volunteers
- Any other philanthropic partners

# Our roadmap to 2030

The WFH approach creates a lasting impact through four interconnected outcomes that collectively drive increased levels of support, bringing us closer to our vision of Treatment for All.



## WITH WHO

We work with:  
NMOs, HTC's, patient groups,  
scientific organizations, governments, and resource  
partners across 150+ countries

## HOW

By prioritizing these initiatives, tools and programs:

- Train & educate
- Provide tools & resources
- Support organizational development
- Convene, collaborate & exchange
- Promote standards of care
- Influence health policies
- Monitor & disseminate safety information

## OUTCOMES

### Capacity

NMOs and HTC's have increased capacity to diagnose, provide quality treatment and care, collect data, and advocate for people with bleeding disorders

### Advocacy

Strengthened engagement with national, regional, and international governmental agencies to ensure bleeding disorders are better integrated in health programs and policies

### Collaboration

Strengthened collaboration with partners and stakeholders to prioritize resources, increase equitable access to treatment, and improve standards of care

### Safety

The community is informed on safety of existing and new treatment products in a timely manner

## KEY IMPACT

### Access

More people with inherited bleeding disorders can reliably access diagnosis, safe treatment, and care — regardless of type, gender, age, or location

## ULTIMATE IMPACT

# Treatment for All

# Strategic Priorities 2026-2030

The WFH has identified the following seven strategic priorities to deliver on our impact roadmap. The World Federation of Hemophilia will:

1. Define and improve the standard of care
2. Develop NMO and HTC capacity to maximize impact
3. Strengthen collaboration with the WHO, governments, and international agencies
4. Implement a monitoring and dissemination strategy on treatment safety
5. Integrate AI and data intelligence
6. Define a strategic collaboration model with key stakeholders
7. Ensure financial sustainability and strengthen organizational efficiency

